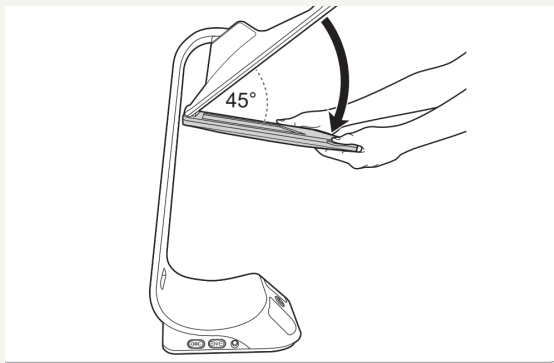


1 Setting up the product



Maximum opening angle: 45°

1. Place the product on a flat, stable, and level surface.
2. Connect the DC plug of the adapter to the **DC IN** port.
3. Connect the plug of the adapter to a suitable socket.
4. Open the screen by pushing it down using the side tabs, away from the mirror.
5. Adjust the screen as required. The maximum opening angle is 45°.



2 Switching the product on/off



1. Press and hold the power button for 5 seconds to switch the product on. The indicator lights up and the desk light switches on.
2. Press the power button to switch the product off. The indicator and the desk light both switch off.

3 Connecting a computer

3.1 Installing the driver

Install the DisplayLink® driver for your operating system by scanning the QR code:



Windows® OS

synaptics.com/products/displaylink-graphics/downloads/windows



Mac® OS

synaptics.com/products/displaylink-graphics/downloads/macOS

3.2 Connecting the product

1. Connect the USB-C cable to the **AV IN** port.
2. Connect the other end of the USB-C cable to the computer.

4 Lights



Desk light on
Top light off



Desk light off
Top light on



Desk light off
Top light off

1. To change the light source or switch the light(s) off, swipe your hand under the light sensor. The light sequence is as follows:

Swipe 1
Desk light on
Top light off

Swipe 2
Desk light off
Top light on

Swipe 3
Desk light off
Top light off

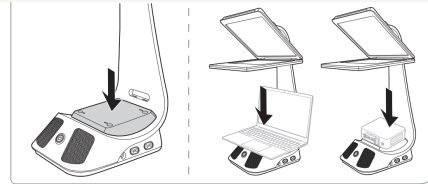


myivi.com

Scan the QR code for the official myivi website and the full instruction manual.

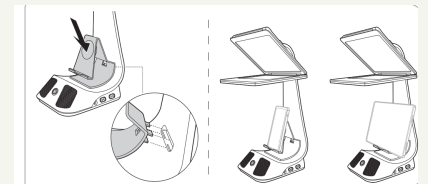
5 Using the accessories

5.1 Laptop / Mini PC base



1. Place the laptop/mini PC base on the curved part of the main unit. This provides a flat surface to place the laptop/mini PC.
2. Place the laptop/mini PC on top of the base.

5.2 Wireless charging base



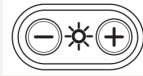
1. Attach the wireless charging base to the curved part of the main unit.
2. To use the wireless charging function, connect the USB-C cable to the **DC OUT** port.
3. Connect the other end of the USB-C cable to the port on the wireless charging base.
4. Place a phone/tablet with wireless charging capabilities on the base. A blue indicator on the side lights up to indicate charging.
5. The base can also support an LCD/touch-screen display attached to a mini PC.

6 Product description: Controls



Volume

Use the + and – buttons to adjust the volume.



Screen brightness

Use the + and – buttons to adjust the brightness of the screen.



Colour temperature

Use the + and – buttons to adjust the colour temperature of the top light.



Light brightness

Use the + and – buttons to adjust the brightness of the desk light or the top light, depending on which light is currently in use.



Product description: Ports



DC IN · 12 V 6 A

Use this port to connect the provided adapter to the product.



AV IN · USB-C

Use this port to connect an external device (e.g. PC/tablet/laptop) to the product using the included USB-C cable.



HDMI IN

Use this port to connect an external device to the product using a cable with an HDMI plug.



USB IN · USB-A

Use this port to connect an external device to the product with a USB-A plug.



DC OUT · 5 V 2 A

Use this port to directly connect an external device for charging using a USB-C cable. Alternatively, use a cable with two USB-C plugs to connect the wireless charging base.



Need more detail?

Scan for the official myivi website and the full instruction manual.